



# BERGEN FILHARMONISKE ORKESTER

## **Main audition: Solo horn**

### Concertos:

Mozart: Horn Concerto no 4, 1<sup>st</sup> movement with cadenza

R. Strauss: Horn Concerto no 1, 1<sup>st</sup> movement

### Chamber music:

Will be announced after the prequalifying round

### Excerpts:

Beethoven: 7<sup>th</sup> symphony

Brahms: 2<sup>nd</sup> symphony, 2 excerpts

Mahler: 9<sup>th</sup> symphony

Shostakovich: 5<sup>th</sup> symphony, 2 excerpts

R. Strauss: Til Eulenspiegel, 2 excerpts

Tchaikovsky: 5th symphony

Ravel: Piano concerto

R. Strauss: Ein Heldenleben

Mahler: 1<sup>st</sup> symphony

Beethoven: 6th symphony, 2 excerpts

Shostakovich: Cello concerto

Wagner: Götterdämmerung

Bruckner: 4<sup>th</sup> symphony

Mendelssohn: a Midsummer Night's Dream

Wagner: Siegfried Ruf

Brahms: 3<sup>rd</sup> Symphony

Dvorák Cello concerto

Mahler: 5<sup>th</sup> symphony, 2 excerpts

Corno I

# Symphonie Nr. 7

A-dur · A major  
op. 92

Ludwig van Beethoven

Poco sostenuto  $\text{♩} = 69$

in La/A

*f* *f* *fp* *fp* *dimin.* *pp*

11

*p cresc.* *ff* *p*

23 A 9 Viol. I

*ff* *f* *f* *f* *f* *f* *f* *f* *f* *f*

41 8 8 Fag. I, II B

*dimin.* *p* *cresc.* *ff* *ff*

Vivace  $\text{♩} = 104$

63 2 Fag. I Fag. I, II

*cresc.* *p*

77 4 5 6

*f > p* *f* *sf* *f* *f* *f* *f*

88

*ff*

96

*p* *cresc.*

# Symphony no. 2

I. Allegro non troppo

Johannes Brahms

Horn in D

Musical score for Horn in D, first movement. The score consists of three staves of music. The first staff begins with the instruction "Solo" and "p dolce", followed by a "cresc." marking. The second staff starts at measure 463 with "stringendo" and "ritard.", followed by "f" and "dim". The third staff starts at measure 473 with the instruction "in tempo, ma più tranquillo".

## II. Adagio non troppo

Horn in H basso

Musical score for Horn in H basso, second movement. The score consists of three staves of music. The first staff begins with the instruction "Solo" and "p". The second staff starts at measure 19. The third staff starts at measure 25 with "dim.", followed by "p", "cresc.", "f", and "dim p".

# Mahler — Symphony No. 9 in D Major

4

## 1. HORN IN F.

offen  
*f* *f* *sf* *sf* *sf* *sf* *p* *f*

Wie von Anfang. *p* *sf* *p* *espr.* Anwachsend. **16** *f*

*molto espr.* *ff* *p cresc.* *f*

Plötzlich bedeutend langsamer (*Lento*)  
u. leise. *Misterioso*. *p* *p* *f molto cresc. ff* *pp*

gestopft *sf* *p* *offen* *p*

*cresc.* *ff* *p subito*

Nicht mehr so lang-  
sam. *tr* *ff* **2**  
Etwas lebhafter.

# Symphony no. 5

I. Moderato - Allegro non troppo

Dmitri Shostakovich

Horn in F

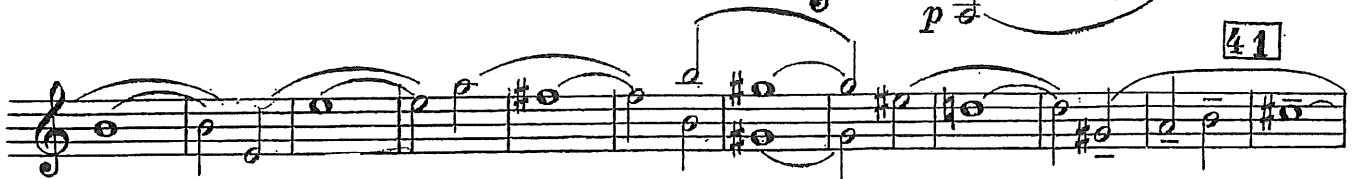
Largamente



a tempo con tutta forza



When divided, play the upper part.



Richard Strauss  
Till Eulenspiegel's Merry Pranks  
Op. 28

Horn I in F.

Gemächlich.  $\text{♩} = \text{♩}_{\text{des}} \frac{4}{8}$  *allmählich lebhafter*

5 *p* *cresc.* *mf* *ff* *sfz* *cresc.* *mf* *cresc.*

Volles Zeitmass. (sehr lebhaft) 1 8 2 2

Volles Zeitmass. (sehr lebhaft) 6 294 *mf marcato*

*fp* *mf* *f* *mf* *f*

1 30 1

2 1 *mf cresc.* *ff* *f*

# Symphony no. 5

II. Andante cantabile, con alcuna licenza

Pyotr Tchaikovsky

Horn in F

SOLO.  
*dolce con molto espress.*

animando riten. A Sostenuto  
*mf p*

animando Sostenuto  
*mf > p*

Con moto dolce anim.  
*p*

Sostenuto  
*mp*

# RAVEL : Klavierkonzert G-Dur

1. Satz

I. Horn in F  
Andante  
*p espressivo*

Richard Strauss  
Ein Heldenleben, Op. 40

in F.  
Lebhaft bewegt.

1. Horn.

*f* *sfz* *dim. p* *p creso.*

4

Gustav Mahler  
Symphony No. 1 in D Major

1. Horn in F

1. Satz

Langsam. Schleppend.

8 Più mosso *acceler. molto rit.* Tempo I. 1 4 Più mosso *acceler. molto rit.*

*pp* *sehr weich gesungen* *pp* *weich und ausdrucksvoll*

2



# Symphony no. 6

III. Allegro

Ludwig van Beethoven

Horn in F



V. Allegretto

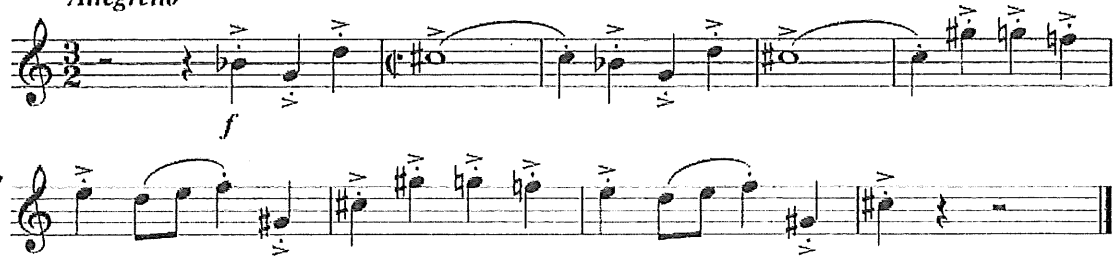
Horn in F



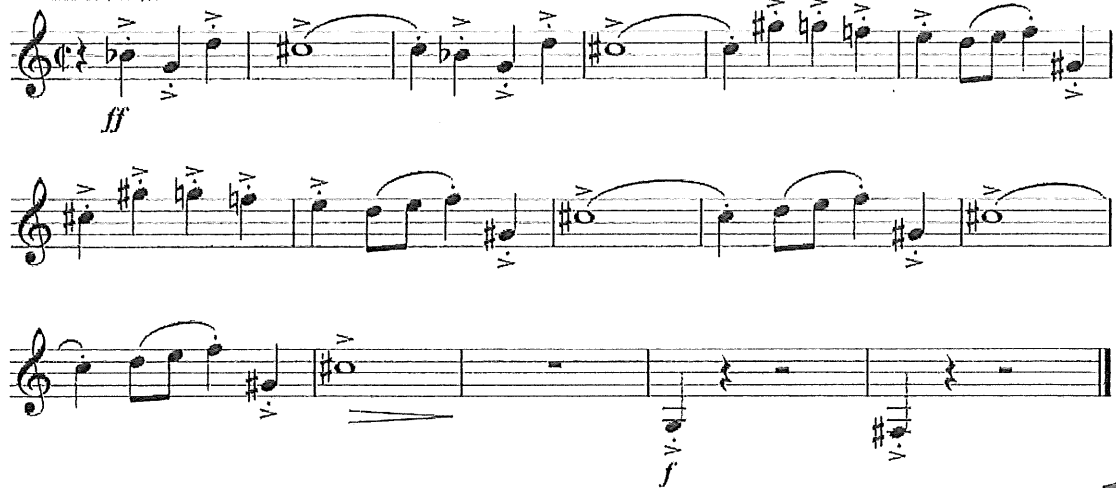
# SCHOSTAKOWITSCH : Cellokonzert Nr. 1

## 1. Satz

I.Horn in F  
Allegretto



I.Horn in F



# GÖTTERDÄMMERUNG

## 2. Akt, 2. Szene

I.Horn in F  
Gemächlich



Anton Bruckner  
Symphony No. 4 in Eb Major (Romantic)

1. SATZ

Horn 1 in F

Bewegt, nicht zu schnell

*mf immer deutlich hervortretend*

*p dim.*

*cresc.*

*mf cresc.*

*cresc. sempre*

*molto cresc.*

*marc. sempre*

2 *Solo* 1 10 1

1 2 20 1

1 1 30 1

1 40 1

50 A 3

60 3

# A Midsummer Night's Dream

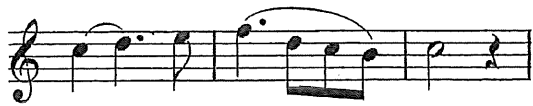
## Nocturne

Felix Mendelssohn

Horn in E

*Andante tranquillo.*

*Solo.*



# Siegfried Ruf

Richard Wagner

Horn in F

Mässig bewegt. (weich stossen)

*f* (sehr kräftig) (sehr stark aushalten) *p*

Mässig.

*cresc.* - - - - - *f* *dimin. p* *p* (zart) *p*

*p* *poco cresc.* - - - - - *f* *dim. > più p* *pp*

(lustig, und immer schneller und schmetternder) (immer stärker)

*p* *cresc.* - - - - - *ff* *ff* *ff*

(sehr schnell und schmetternd)

*p* *cresc.* - - - - - *ff*

# BRAHMS : Sinfonie Nr. 3

## 3. Satz

I. Horn in C  
poco Allegretto

*mp espress.*

*ossia*

5

Dvorák — Cello Concerto

## Corno I.

3

### II.

in D.

Adagio ma non troppo. M. M.  $\text{♩} = 108$ .

*p* *fp > pp* *p* *poco accel.*

Tempo I. *ritard.* Tempo I. *ff* *p* *dim.*

*un poco più animato* *poco a poco rit.*

*pp* *Meno. Tempo I.* *f* *dim.* *in F.* *p*

*un poco più animato*

*Meno. Tempo I.* *p Solo.* *dim.* *Tempo I.* *ff* *dim.*

*p* *pp* *in E.*

III

# Symphony no. 5

## III. Scherzo

Gustav Mahler

Horn in F

The musical score for Horn in F, III. Scherzo, Gustav Mahler, is presented in three systems. The first system consists of two staves. The first staff begins with a dynamic of *p*, followed by *ff*, *fp*, and *fp*. The second staff starts with *ff* and includes the instruction "no-k." above a first ending bracket labeled "1". The second system also consists of two staves, with the first staff marked *fp*. The third system consists of a single staff, starting with a dynamic of *p* and the instruction "molto espress.". A first ending bracket labeled "12" spans the first few measures of this system, which concludes with the instruction "espress.". The score is written in treble clef with a key signature of one flat (F major/D minor).