

The end termination of pipe insulation is a critical point for prevention of water ingress into the pipe insulation material. The installation of metallic end caps may be challenging with respect to water ingress and can potentially damage the pipe coating due to sharp metal edges as a result. This leads to a major risk for development of CUI.

Benarx Preformed End Cap Gasket reduces installation time significantly compared to traditional metallic end caps. The product is preformed to the pipe dimension and insulation thickness and is therefore easy to install and does not require modifications to fit. The risk of damaging the coating system and the heat trace cables during installation is mitigated by using Benarx Preformed End Cap Gasket.

Preformed product that reduces installation time significantly compared to steel end caps

Secures a waterproof end cap termination for steel cladding

Eliminates damages to the coating on the piping surface which reduces development of CUI

Prefabricated design eliminates fabrication on site and reduces HSE risk

Continuous maximum operating temperature up to 270 °C

Tested according to NORSOK requirements:

- Tested for max temperatures ranging from 250 °C up to 350 °C
- Tested for reaction to fire according ISO 11925
- Aging and cycling tested according ISO 12944



CUI Detection



STANDARDIZED DIMENSIONS

Benarx Preformed End Cap gasket is molded in standard dimensions to allow rapid lead-time and consistent quality.

Standard sizes are available in the following gasket heights:

17 mm, 22 mm, 27 mm, 32 mm, 37 mm, 42 mm, 47 mm, 52 mm, 57 mm, 62 mm, 72 mm.

The available “in stock” sizes within the table below have been selected to cover 95% of historical demand and are designed to cover the most frequently used combinations of pipe size and insulation thicknesses.

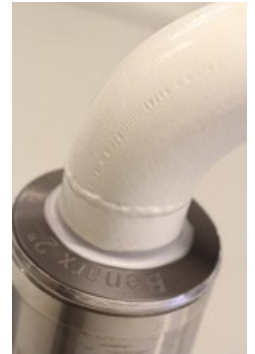
Provided large quantity request, additional sizes can be offered as long as they adhere to the standardized 5mm step system - below. Contact Beerenberg to find out which dimensions are currently in stock.

All gaskets are delivered with water-shed angles which allows them to be used on horizontal as well as vertical insulation-terminations.

The front side of the gasket is engraved with the standard article number indicating its size and dimensions.

The table below shows a the dimensions which need to be specified when ordering end cap gaskets. All measurements should be specified in millimeters

Requested dimensions in between these sizes will be rounded up and delivered to the nearest standard size gasket size.



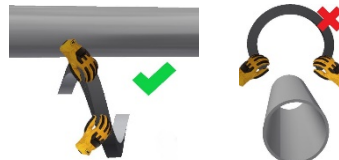
Step 1 - Cut Gasket



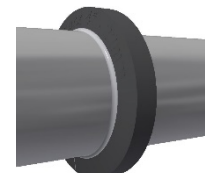
Step 2 - If Heat Trace



Step 3 - Twist and stretch instead of just stretching to avoid rupture when placing



Step 4 - Always ensure proper sealant



Installation:

Available standard dimensions molded Benarx Preformed End Cap Gasket

Benarx Preformed End Cap Gasket

NPS	Inner diameter B (mm)	Gasket height A (mm)							
		17	22	27	32	42	52	62	72
3/8	15	N/A	Available	Available	N/A	Available	Available	N/A	N/A
1/2	21	Available	Available	N/A	Available	Available	Available	N/A	N/A
1	34	Available	Available	Available	Available	Available	Available	N/A	N/A
1 1/2	48	N/A	Available	Available	Available	Available	N/A	N/A	N/A
2	60	Available	Available	Available	Available	Available	Available	Available	Available
3	89	Available	Available	Available	Available	Available	Available	Available	Available
4	114	Available	Available	Available	Available	Available	Available	Available	Available
6	168	N/A	Available	Available	Available	Available	Available	Available	Available
8	219	N/A	Available	Available	Available	Available	Available	Available	Available
10	273	N/A	Available	Available	Available	Available	Available	Available	Available
12	324	N/A	Available	N/A	Available	N/A	Available	Available	Available
14	356	N/A	Available	Available	Available	N/A	N/A	Available	Available
16	406	N/A	Available	N/A	Available	N/A	Available	Available	Available
18	457	N/A	N/A	N/A	N/A	N/A	N/A	Available	Available
20	508	N/A	Available	N/A	N/A	N/A	N/A	Available	Available
24	610	N/A	Available	N/A	N/A	N/A	Available	N/A	Available

• All end caps will have 2 mm larger diameter than the insulation thickness.

• Dimensions listed in table are standard dimensions delivered as molded end caps with slope and at a discounted price.

• Upon request other dimensions can be delivered as standard, dependent on order volume.

• For non-standard dimensions, see datasheet for cutted Benarx Preformed End Cap Gasket.

